

'Florida Friendly Yards'

Educational Series Workshop 3

Saturday, July 18, 2009

Tampa Palms

'Florida Friendly Yards'

- Welcome back!
- Who am I?
- What's today's workshop about?



Jason says 'hello'... he is busy with research today

Tampa Palms Owner's Association

- www.tpoa.net/BOD.html
- Board of Directors:
 - President: Bill Edwards
 - Vice President: Jake Schoolfield
 - Secretary: Barbara Shimer
 - Treasurer: Dudley Bryant
 - Director: Ernie Angelilli



Partnering Recognition/Credits

- Floridayards.org
- UF IFAS Extension
- SWFWMD
- DEP



Housekeeping

- This is an informal presentation...no test at the end, ask questions
- We will give away plants today throughout the presentation (put your name on the card!)
- Take your own break if you need to

Housekeeping

- Today's workshop: 'FYN at your house'
 - 10:00 – 11:00: plants/ design discussion (HKA)
 - 11:00 – 11:10: break
 - 11:10 – 11:45: recent legislation (UF/ IFAS)
 - 11:45 – noon: wrap-up

Literature

Florida Friendly
Best Management Practices
for Protection of Water Resources
by the Green Industries



Florida Wildflowers & Butterflies



Florida is home to a spectacular array of wildflowers and butterflies. There are some 2800 native plants and more than 180 species of butterflies for residents and visitors to enjoy year round. This diversity is due in part to Florida's geographic location – it is suitable for many temperate and subtropical species. Invite butterflies to your yard by gardening with native plants. Cater to their life cycle needs by including nectar plants for adult butterflies and host plants for their larvae.

Butterflies have four life stages: egg, larva (caterpillar), pupa (chrysalis), and adult. By planting host plants, you are providing food for caterpillars and can enjoy watching them grow and transform into adult butterflies. The life cycle below shows the egg, larva, pupa, and adult stages of the Zebra Longwing on its host plant, Purple Passionflower.



Our State Butterfly

Zebra Longwing (*Heliconia charitonius*) is Florida's state butterfly. Found throughout the state, the delicate adults may live for several months. Females deposit small, yellow eggs on young leaves and tendrils of Purple Passionflower. They may produce numerous generations each year.

Our State Wildflower

The genus *Coreopsis* is Florida's state wildflower. Often called tickseed, the plants' small seeds cling to clothing or pet hair and resemble insects. Thirteen *Coreopsis* species occur in Florida, two of which are found only in Florida. *Coreopsis* is frequently planted in gardens, and can often be seen along roadsides.

A Guide to Florida-Friendly Landscaping



Florida Yards & Neighborhoods Handbook



EXTENSION

Mulches for the Landscape



UF UNIVERSITY OF FLORIDA IFAS Extension

Hillsborough County Extension

FERTILIZER FACTS

Florida-friendly lawn and garden practices



UF UNIVERSITY OF FLORIDA IFAS Extension Florida Yards & Neighborhoods

What are we trying to accomplish today?

- Quickly recap the Florida Yards and Neighborhoods program (FYN) and the last workshop
- Review some Florida Friendly plants
- Explore a few 'real life' design studies at some Tampa Palms residences



Disclaimer

- Ongoing research
- We are not the complete experts
- Today is a little more detailed and site specific on what can work in Tampa Palms
- As mentioned the last time we presented...this is not an 'all or nothing' approach

Contact Information

- If you would like a PDF of this presentation, we can email it to you:

jrinard@hka-design.com

- The presentation will also be made available online at the Tampa Palms website:

www.tpoa.net

Plant giveaway time



Featured Plant



- Use: Groundcover or vine
- Flowers: white, April-May, fragrant
- Full sun to part shade

Variegated Confederate Jasmine/
Trachelospermum jasminoides 'Variegata'

Brief recap of Workshop 1





Workshop 1 recap...

- Florida Yards and Neighborhoods Program is science/ research based education and research implemented through the UF IFAS Cooperative Extension Service
- Partnership of several agencies/ groups to help address Florida's problems of pollution, water shortages, and habitat loss through the UF IFAS

Workshop 1 recap...

- Reviewed the history:
 - Started with the idea of 'xeriscape'
 - Greek word xeros for 'dry' + landscape
 - Started in Colorado
 - Reduce or eliminate need for water



Workshop 1 recap...

- FYN expands upon the ideas behind water conservation but also employs other environmental practices to create a healthy landscape

Workshop 1 recap...

- Good for you, your wallet, and the environment



Workshop 1 recap...

- We did check back on the pre-quiz question from last time and the answer we had listed was indeed incorrect as suspected.

Here it is again...

Attract Wildlife



- Pre-quiz (from floridayards.org)
 - You can attract more wildlife to your yard by:
 - A. Providing more open spaces
 - B. Making sure grasses and flowers don't go to seed
 - C. Remove caterpillars as soon as you see them
 - D. Increasing the diversity of plants
 - E. All of the above



Workshop 1 recap...

Nine Principles of the FYN Program



Right Plant, Right Place



Water Efficiently



Fertilize Appropriately



Mulch



Attract Wildlife



Manage Yard Pests Responsibly



Recycle



Reduce Stormwater Runoff



Protect the Waterfront



Plant giveaway time



Featured Plant



- Use: small shrub (2-3' height)
- Flowers: white, pink, red, lavender, spring through fall; attract hummingbirds and butterflies
- Full sun to part shade

Pentas aka Egyptian Star Flower/
Pentas lanceolata

Plant possibilities at Tampa Palms



How do I select the right plant...

- Understand your yard conditions
- Walk around and look at areas in Tampa Palms that work and take photographs
- Make friends with the Hillsborough County Extension Service; they are very helpful

How do I select the right plant...

- Utilize the plant list contained in the 'FYN' handbook to reference characteristics
- Consult with your local gardening shop
- Don't be afraid to plant a test plot in your yard (especially in deer prone areas)

Some top local performers...

- Canopy trees:

Live Oak

Shumard Oak

Magnolia (var. 'Bracken's Brown Beauty',
'Blanchard', or 'Little Gem')

Bald Cypress



Some top local performers...

- Understory trees:

Crape Myrtle

Weeping Yaupon Holly

Ligustrum

Walter's Viburnum



Some top local performers...

- Palms:

Sabal Palm

Washingtonian Palm

Pindo Palm

European Fan Palm

Windmill Palm

Pygmy Date Palm



Some top local performers...

- Shrubs:

Dwarf Yaupon Holly

Variegated Flax Lily

Florida Coontie

Carissa Holly

Dwarf Indian Hawthorn (deer caution!)

Thryallis



Some top local performers...

- Groundcover + perennials:

Minima Jasmine (regular + variegated)

Confederate Jasmine (regular + variegated)

Ornamental Perennial Peanut

Dwarf Mexican Petunia

Dwarf Pentas



Some top local performers...

- Ornamental Grasses:

Muhly Grass

Fakahatchee Grass (Dwarf and regular sizes)

Sand Cordgrass aka Spartina



Deer resistance...

- Use the UF/ IFAS plant list as a reference but keep in mind that local conditions can affect deer eating habits. Just because it is on the list doesn't mean they won't devour.
- If in doubt consider test plots (i.e. a few plants to start) are a good idea before investing lots of money in plants that will soon become a tasty treat for wildlife.

Deer resistance...

'Ornamental plant susceptibility to damage by deer in Florida'

<http://edis.ifas.ufl.edu/UW137>

Plant giveaway time



Featured Plant



- Use: groundcover and native wildflower
- Flowers: purple
- Full sun to part shade

Sunshine Mimosa aka Powderpuff/
Mimosa strigillosa

Ideas on integrating 'FYN' principles at Tampa Palms



Background information

- A few willing (and fearless) workshop 1 participants were gracious enough to allow their residences to be photographed and utilized for discussion purposes at this workshop.

Thanks again for participating!

- These ideas are suggestions only based on an approach of implementing multiple 'FYN' principles into an existing residential yard at Tampa Palms.
- Remember that this is not an 'all or nothing' approach

Residence 'X'



Site Context

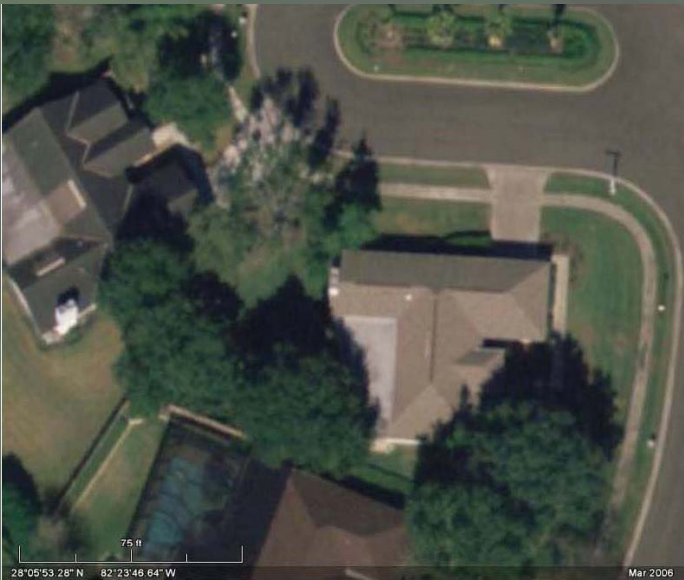
- Big corner lot
- Across the street from wetland conservation area

bing

25 yds

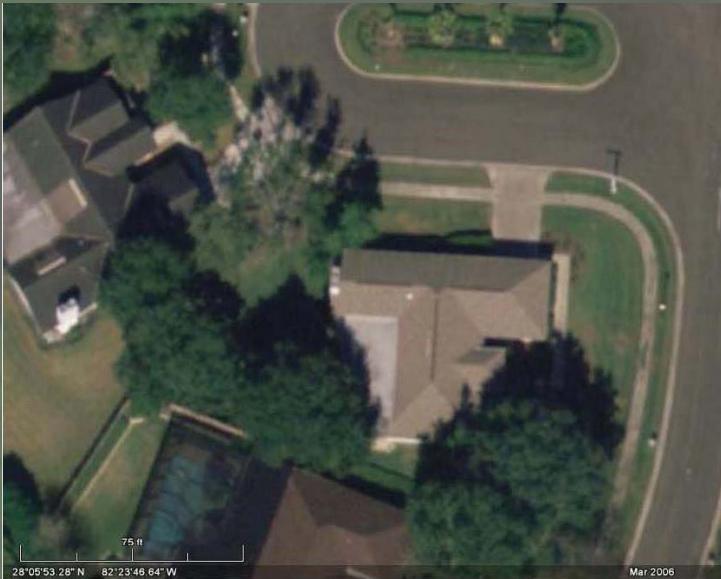
© 2008 Microsoft Corporation © 2008 VANTAGE
© 2008 Google Earth LLC © 2008 Microsoft Corporation

Site Analysis



- Corner lot, majority grassed
- Good shade trees (along south perimeter)
- Other trees in fair condition
- Some erosion issues at side yard
- Existing turf has pest damage and Bermuda infiltration
- Foundation planting that can be utilized in any renovation efforts

Overall objectives



- Reduce the amount of turf to be maintained
- Address erosion area
- Provide plantings at entry that will thrive throughout the season
- Reduce overall water use
- Look for other opportunities to employ FYN principles

Considerations...



- Implement groundcovers within strip between sidewalk and curb (100% or partial planting)

Considerations...



- Expand landscape bedlines and integrate additional trees (canopy and understory) along with durable groundcovers and shrubs

Considerations...



- Consider groundcover planting here as well
- Expand foundation planting
- Switch turf at side yard and rear yard (in sunny areas) with Bahia grass

Considerations...



- Eliminate erosion by reducing water runoff velocity through implementing additional gutter and/ or drain collection points along the property line.

Drainage products for this application...



**Flush grate with
catch basin**



**corrugated
pipe**

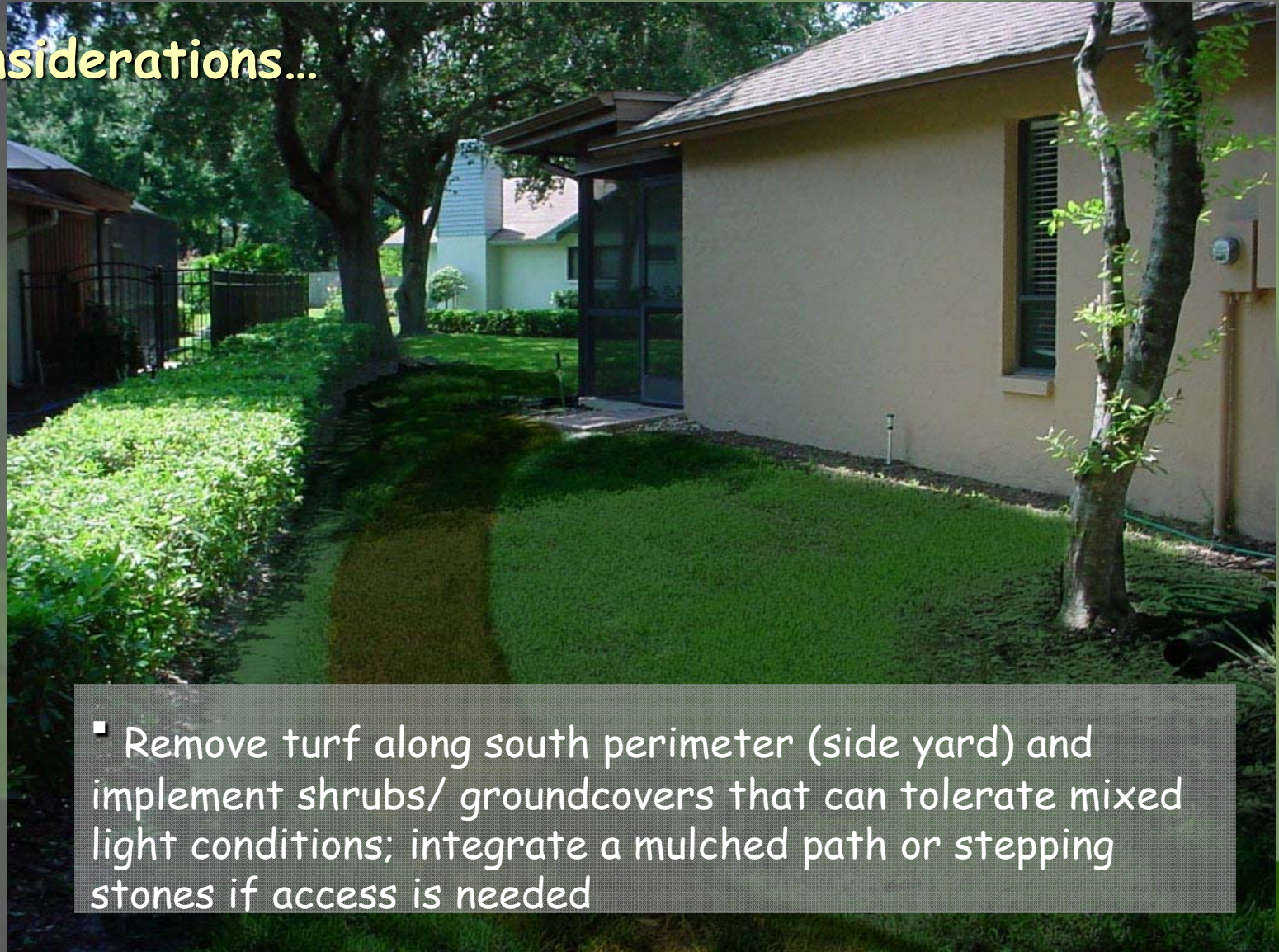


**atrium grate for
planted areas**



pop-up emitter

Considerations...



- Remove turf along south perimeter (side yard) and implement shrubs/ groundcovers that can tolerate mixed light conditions; integrate a mulched path or stepping stones if access is needed

Considerations...



- Good spot to think about utilizing a rain barrel collection point from the downspout

Plant giveaway time



Featured Plant



- Use: Groundcover or vine
- Flowers: pale yellow, fragrant
- Full sun to part shade

Minima Jasmine/
Trachelospermum asiaticum

Featured Plant



- Use: shrub or perennial (2-4' high)
- Flowers: yellow, year round, attracts butterflies
- Full sun

Beach Sunflower/
Helianthus debilis

Residence 'y'



Site Context



- Immediately adjacent to wetland conservation area

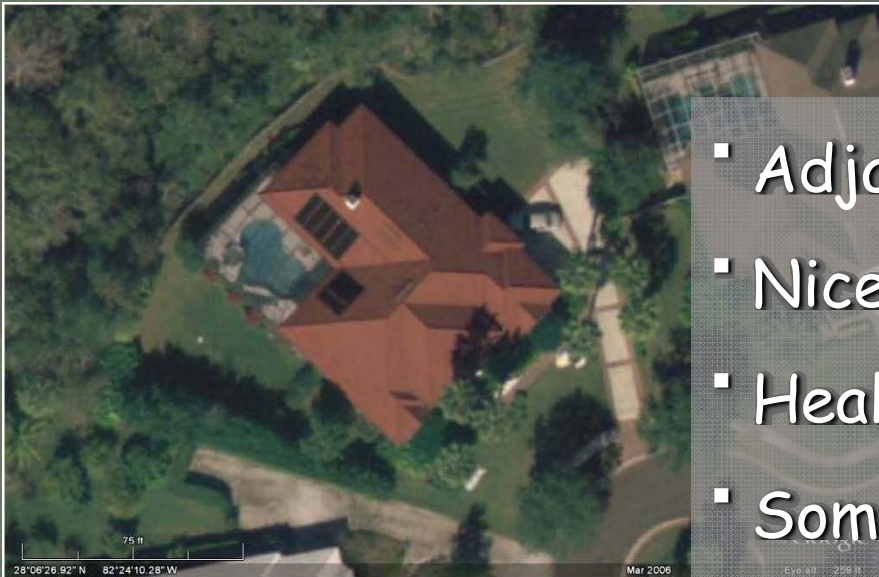


30 yds



© 2008 Microsoft Corporation. All rights reserved. Microsoft, Bing, and the Bing logo are either registered trademarks or trademarks of Microsoft Corporation in the United States and/or other countries.

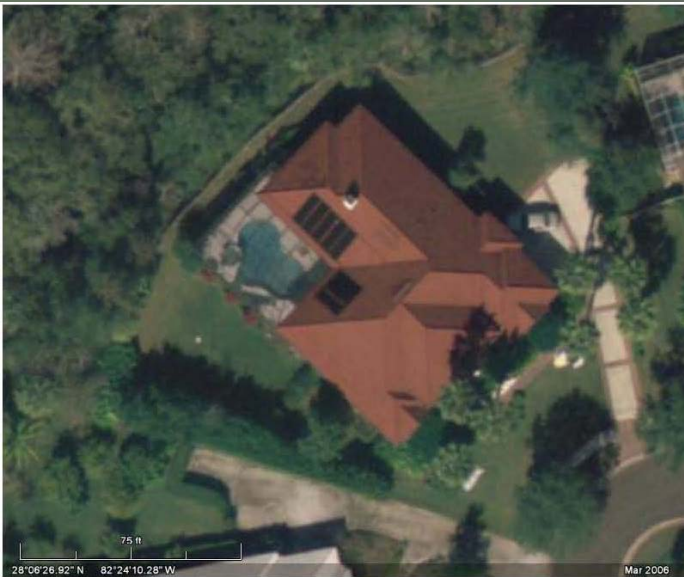
Site Analysis



- Adjacent to conservation area
- Nice palm trees
- Healthy foundation plantings
- Some freeze damaged plants
- Thinning turf in shaded areas
- Need to maintain 'dog run' in rear



Overall objectives



- Reduce the amount of turf to be maintained
- Provide sustainable color in front yard
- Reduce overall water use
- Look for other opportunities to employ FYN principles

Considerations...

Dwarf Pentas

Minima Jasmine

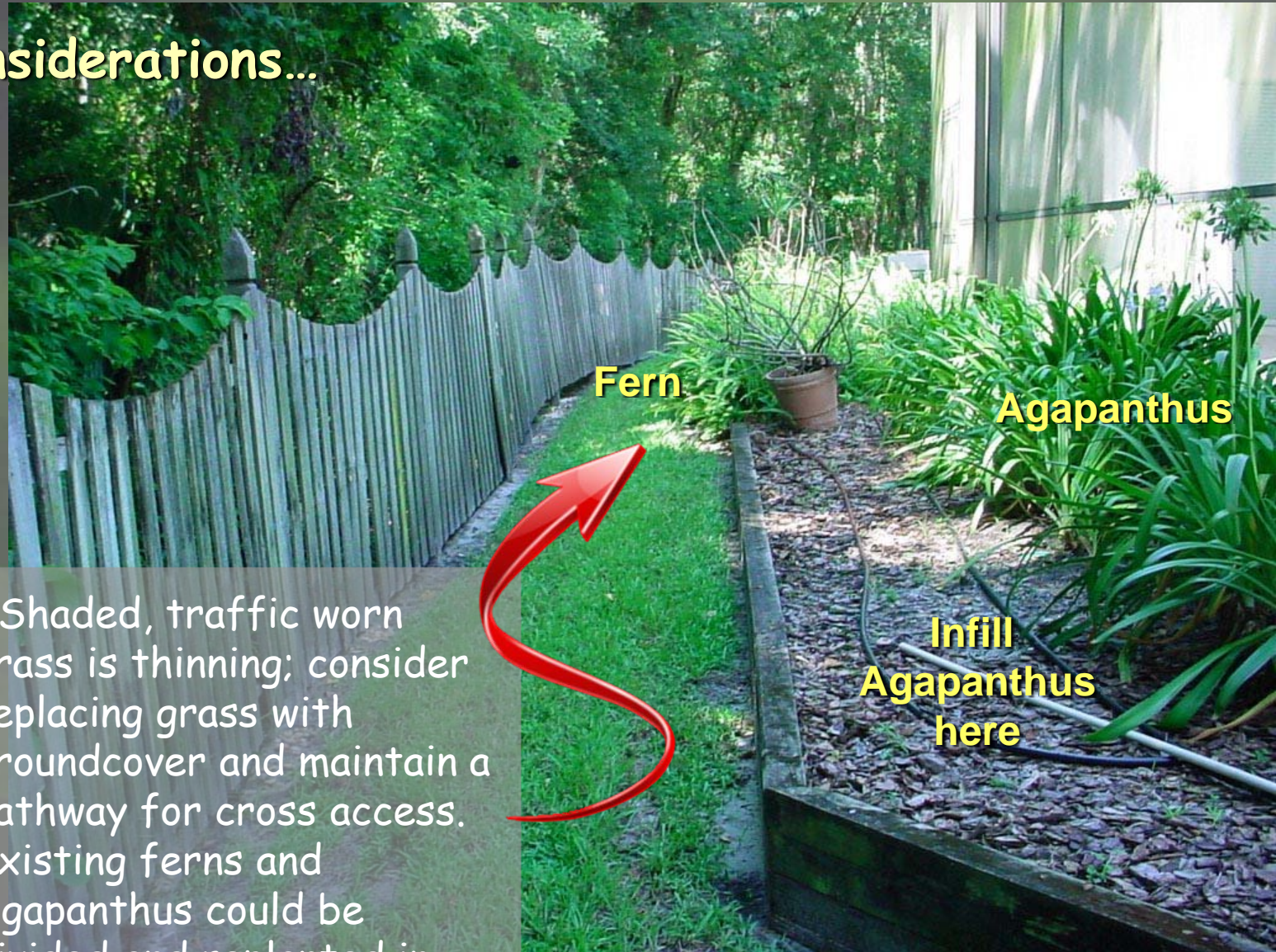
▪ Even with healthy foundation plantings the amount of turf can be further reduced by expanding existing bedlines and implementing durable shrubs and groundcover

Considerations...



- Think about maintenance practices:...individual trimming of shrubs consumes more time and energy compared to promoting shrub massing

Considerations...



▪ Shaded, traffic worn grass is thinning; consider replacing grass with groundcover and maintain a pathway for cross access. Existing ferns and Agapanthus could be divided and replanted in this area.

Considerations...



▪ This sunny section of the yard is maintained for part of the 'dog run', however, there are other uses and/or elements that could be implemented depending on family needs and hobbies

Considerations...



▪ This property would be a good location to think about installing a bat house in the rear yard. An active bat population can assist with mosquito control adjacent to the conservation area.

Considerations...



Concealed spot
from drive for
compost bin
location



Philodendron

Shady area for
hammock; remove turf
and provide a mulched
area underneath

▪ Reduce more turf by adding plantings in shaded areas; switch turf variety to Bahia in sunny areas

Multiple Plant giveaway time



Featured Plant



- Use: Groundcover
- Flowers: white, summer
- Full sun to full shade

*Mondo Grass/
Ophiopogon japonicus*

Featured Plant



- Use: ornamental grass (3-4' height)
- Flowers: pink-purple, fall
- Full sun

Muhly Grass/
Muhlenbergia capillaris

Residence 'Z'

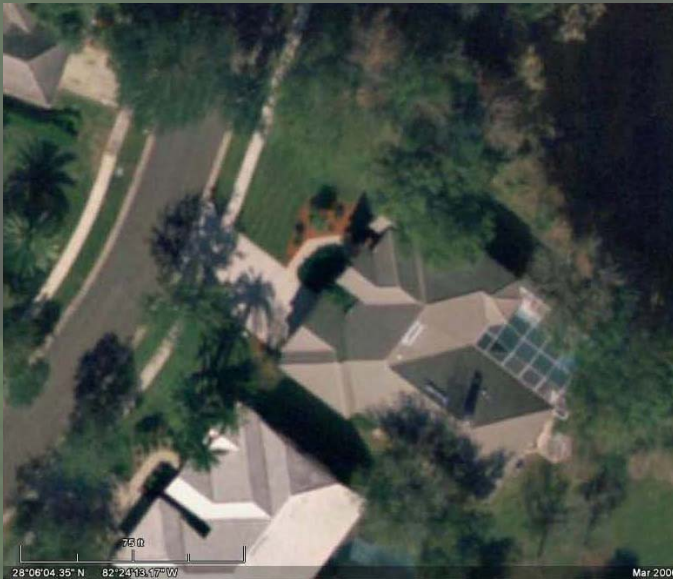


Site Context

- Adjacent to pond and wetland conservation area

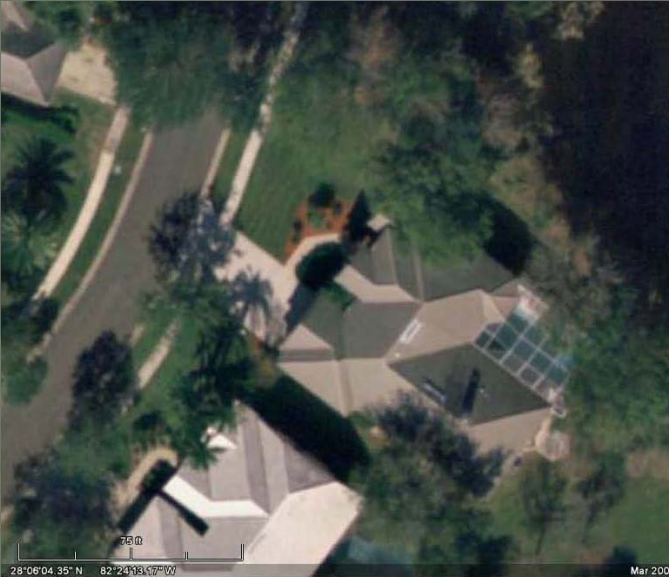


Site Analysis



- Adjacent to pond which is an enjoyable amenity that attracts wildlife
- Front yard landscaping is fairly well balanced between turf and beds
- Trees providing lots of shade in rear and side yards
- South side yard appears to be only used for occasional access; not much function

Overall objectives



- Complement the wetland with additional vegetation to filter runoff
- Control water runoff to minimize erosion
- Reduce the amount of turf to be maintained
- Look for other opportunities to employ FYN principles

Considerations...

Minima Jasmine
Confederate Jasmine
Sword Fern
Holly Fern
Coontie
Cast Iron Plant
Dwarf Yaupon Holly
Crinum Lily (as accents)
Philodendron (this photo at right)

▪ Shaded out grass along side yard is thin; consider removal and replacement with ground covers and shrubs while still allowing access

Considerations...



Dwarf Pentas
Milkweed
Salvia
Porterweed
Butterfly Bush



▪ This area offers filtered sunlight and would be a good spot to plant a perennial garden for some color (seen from the pool deck); attract birds with feeder or bird bath

Considerations...



- Add deck above root zone of existing trees; implement native grasses/ ferns to stabilize soil and provide additional filtering of water runoff

Multiple Plant giveaway time



Featured Plant



- Use: shrub
- Part shade to part sun, can tolerate full sun

Florida Coontie/
Zamia pumila

Featured Plant



- Use: Groundcover
- Flowers: yellow, edible peanut flavored
- Full sun to part shade

Ornamental Perennial Peanut/
Arachis glabrata

Thanks again to...

Tampa Palms Owner's Association

Floridayards.org

UF IFAS Extension Service

Southwest FL Water Management District

Florida Dept. of Environmental Protection

Our residential participants for this workshop

Official Break Time

