



TAMPA PALMS NEWSLETTER

July 2023



Hurricane Season Is Here Are You Ready?



Tampa Palms & Storm Threats

It can be said that everywhere on the Florida peninsula has exposure to damage from major storms. After the damage brought by Milton to the Tampa Bay area and even to Tampa Palms itself, many of our neighbors are properly getting ready for the 2025 storm season.

- Wind-Born Debris Risk 130 MPH
- Storm Surge Category 5 Hurricane

Is Tampa Palms Storm-Safe?

As we saw from Milton, absolutely not! Major storms, even if they do not involve “direct hits” on the community can do substantial damage, both directly and indirectly to trees and lanai screens.

Major storms can damage or stop critical services and infrastructures:

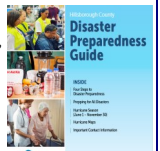
- **Electricity** - Although Tampa Palms enjoys underground power to the homes, that power depends on sources that are above ground and vulnerable.
- **Potable Water** - Water depends on pumping stations far from Tampa Palms.
- **Sewage** - The sewer systems depend on power to pump raw sewage to treatment plants. Even with battery back-ups, loss of power can occur.
- **Telephone & Internet** - These services are heavily dependent on power, and the carriers’ services may be down.
- **Trees Down** - Trees uprooted by the combination of high winds and rain-soaked ground can block roads and even damage homes.
- **Street Flooding** - Intense rain may over fill drains resulting in street flooding.

How Should Tampa Palms Residents Prepare?

Without a doubt, both for personal safety and post-storm livability, residents should have on hand some form of storm preparedness.

Hillsborough County Emergency Management has developed an excellent *Disaster Preparedness Guide* which is available online and can be downloaded from either the TPOA website at

<http://tpoa.net/DisasterPlanningGuide.pdf> or from the Hillsborough County web site.



Three important elements the Disaster Planning Guide highlights include:

1. Determine Your Risk

An important first step for all residents is to determine risk, as hurricanes are not just coastal disasters.

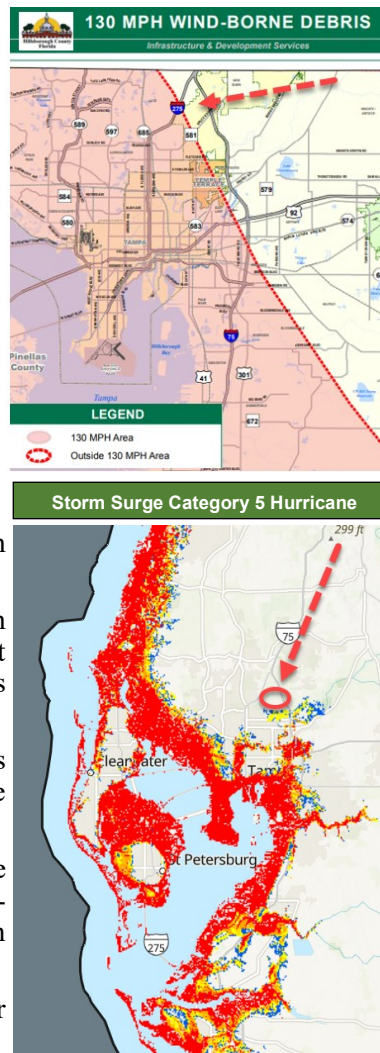
The impacts of wind and water can be felt for hundreds of miles, so knowing your home’s vulnerability is vital.

2. Make a Plan

Being prepared starts by having a plan. Where do you go if you have to evacuate? What should you do if you are sheltering in place? What should you have on hand?

3. Stay Informed

During a disaster, it’s vital to stay up-to-date with the latest information from a reliable source. In Hillsborough County you can trust HCFLGov.net/StaySafe, the HCFL Alert system, as well as, the City and Hillsborough County’s social media channels on Facebook,





News From the TPOA



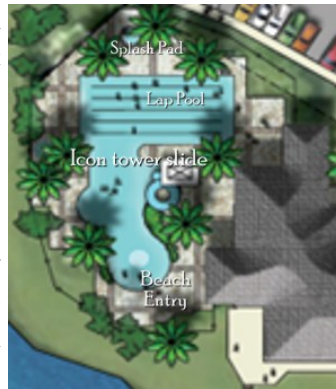
What Is Next For Tampa Palms?

Tampa Palms is 42 years young and making certain that it is up-to-date and filled with amenities that serve the more than 6,500 folks that enjoy the community is a continuing process.

Revitalization began at Compton few years ago and Phase I concluded with a new building for meetings and other events that better serve the residents, a modernized playground, two pickleball courts and upgrades to the a/c and water systems.

Phase II, directed at the pool and swim facilities, along with court and other updates, can't come soon enough.

The pool structures and the equipment are aging. There are many new and more present-day options for owners to consider to upgrade a pool originally built in the late 1980's.



As was done to plan the community center modernization, community meetings facilitated by a community architect, Jason Rinard, will be held to discuss and review what is provided in new upscale communities and gauge the needs and requirements of Tampa Palms owners.

A final date has not yet been established; when it is, each owner will be notified of this opportunity by US Mail.

Tampa Palms Wildlife; Pleases Don't Feed

One of the many reasons that residents move to Tampa Palms is the thousands of acres of conservation lands filled with native "wildlife". The presence of so many animals comes with **cautions and responsibilities**.

Cautions certainly apply to alligators. Alligators are a fact of life in Tampa Palms; a FWC ranger once estimated that there are more than 10,000 gators in the area, thanks to the Hillsborough River and Cypress Creek areas. Important safety rules include:

Rule 1 NEVER feed alligators.

Rule 2 NEVER approach pond banks, the especially with children or dogs on a leash

Rule 3 Stay away from ponds in the spring when gators may be nesting.



Responsibilities Play A Role Too

The Humane Society and Florida Wildlife Commission suggest a few rules that help wildlife co-exist in Tampa Palms with people.

1. Never leave a pet out of doors or on a screened porch by itself.
2. Never leave food outdoors for any wild animals, from the birds (hawks, owls, ducks) to the small mammals (raccoons, rabbits, possum) and certainly not the predators (bobcats, coyotes, foxes).

Tampa Palms governing documents, specifically the adopted and filed CCRs which are online at <https://tpoa.net/Rules.html>, state clearly that it is a violation to approach or feed wild animals.

WINDOW HERO

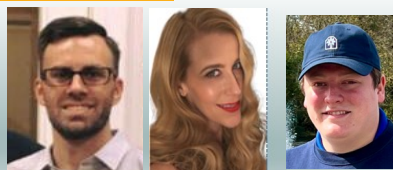
- Window Washing • House Wash
- Pressure Cleaning • Roof Wash
- Gutter Wash • Gutter Guard

David DiRenzo
(813)-538-7800
Northern Tampa

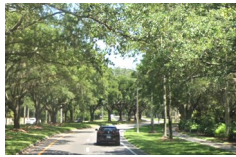


WindowHero.com Tampa Palms Elementary & Liberty Middle School PTSA Sponsor

The Tampa Palms



Professional Staff



Trees: Quintessential Tampa Palms The Most Impressive Canopy In the City



Trees Are a Community Asset 75% Canopy Coverage

Tampa Palms's beautiful tree canopy isn't just for looks, it's a vital part of the ambiance of Tampa Palms and the environment of our urban-suburban enclave.

Trees provide shade, reduce stormwater runoff, improve air quality, and help lower energy bills. During storms, healthy trees actually buffer wind from homes and reduce flooding. Simply put, Tampa Palms needs its trees.

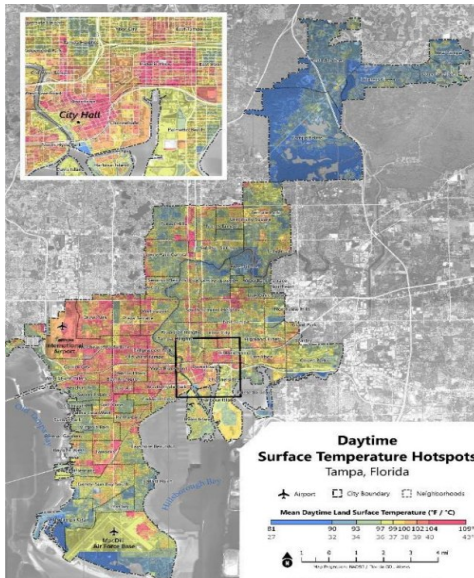
The City of Tampa inventories the tree canopy in the city and produces an assessment of benefits of the urban forest and its value to Tampa. This is conveniently available online for review at <https://www.tampa.gov/city-planning/natural-resource-planning/tree-canopy-analysis>.

Tampa Palms is ranked as the #1 neighborhood by percent of tree canopy with 75% tree coverage,

Also, the Tampa Palms tree canopy is increasing and not showing the sad decline seen in many other parts of the City of Tampa.

The graphic to

Neighborhood Association	2016 Tree Canopy	2021 Tree Canopy	Canopy Change
Tampa Palms	73%	73%	0.2%
Hunter's Green - Pinnacle	55%	60%	4.4%
New Suburb Beautiful	58%	57%	-1.1%
Hampton Terrace	53%	53%	-0.1%
New Tampa - The Sanctuary	54%	53%	-1.3%
Hunter's Green - Cypress Ridge	50%	52%	2.2%
Hunter's Green - Heather Downs	55%	52%	-3.1%
Ballet Point	50%	51%	0.4%
Sunset Park	48%	50%	1.9%
Bayshore Beautiful Neighborhood Association, Inc.	51%	50%	-1.1%
Heritage Isles	50%	50%	-0.3%
East Arbor Heights Neighborhood Association	48%	48%	0.2%
Southeast Seminole Heights	47%	48%	0.4%
Beach Park	45%	47%	1.7%
West Meadows	49%	46%	-2.3%
Virginia Park	46%	46%	0.6%
Riverbend	49%	45%	-4.4%
Hunter's Greene	47%	44%	-2.3%
South Seminole Heights	44%	44%	-0.3%
Golfview	45%	44%	-0.7%
Parkland Estates	45%	44%	-0.9%
Old Seminole Heights	44%	43%	-0.7%
Forest Hills Neighborhood	42%	43%	0.7%
Live Oaks Square Neighborhood Association	44%	43%	-1.1%
Historic Hyde Park	42%	42%	0.6%
Northeast Community Crimewatch & Civic Association	43%	42%	-0.7%
Palma Ceia	41%	41%	0.5%
Port Tampa City Civic Association, Inc.	41%	41%	0.6%
Hyde Park Preservation	44%	40%	-3.1%
Bel Mar Stores	38%	40%	2.4%



the left, shows the value of the tree canopy on surface temperature in the City of Tampa

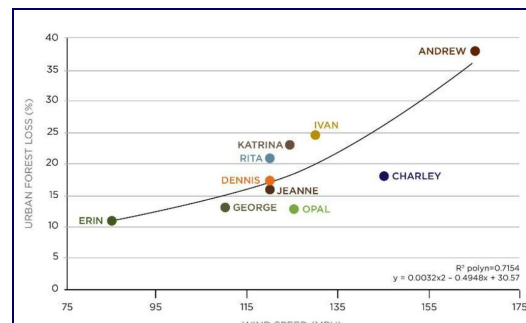
The hotspots in some areas are quite startling but there are no such areas showing in Tampa Palms or New Tampa.

Bottom line; this means a healthier environment and lower power bills.

What About Storm/Wind Damage IFAS Has Studied For Decades

Many of our Tampa Palms neighbors are validly concerned about what will happen "next time" after last year's damage from Hurricane Milton.

Urban forest damage has been studied by IFAS for decades. Some of the lessons learned can be found online: <https://edis.ifas.ufl.edu/publication/FR173>



Milton is not yet included in the study but the winds gusts in this areas were measured at 92 MPH.

For anyone concerned about a tree on their property there are two important steps recommended:

- ◆ Regular Inspections: Have a certified arborist inspect your trees to identify weak branches, disease, or any structural issues.
- ◆ Proper Pruning: Remove dead or weak branches using correct pruning techniques. Avoid topping trees, as it weakens their structure and increases storm damage risk.

What About Dangerous Trees? Don't Hesitate, Take Action

Although trees are protected by the City of Tampa and there are fines for unapproved removals, per City guidelines, a tree can be removed if it poses an "unacceptable risk" to people or property; this a risk that cannot be mitigated. This must be certified in writing by a licensed arborist or landscape architect.

1. Retain a licensed arborist or landscape architect
 - Get a written and signed report
 - Include pictures
2. File a RMC with the documentation
3. Have the tree removed.



Update: Storm Water Ponds Tampa Palms Workhorses



Why Are The Ponds So Low?

There is no question, the ponds along the boulevards, in the parks and at the main entries in Tampa Palms are a treasured amenity.

Each year in the late Spring, many residents inquire of the TPOA and CDD as to why the ponds are so low. Many also ask if the ponds can be filled to preserve the *look* of them.



High heat and virtually no rain from March to the first week of June (and then only about 1.2 in of rain) have caused the water to recede in most ponds, some have fallen 6 feet or more.



This is simple evaporation and when the normal June and July rainstorms commence, the ponds will refill.

What Is The Purpose of the Ponds?

The ponds were not created as a aesthetic entities, they were built by the developers as required stormwater retention facilities. The ponds hold water from the public stormwater pipes to remove harmful chemicals, such as fuels, oils and fertilizers, before the water is allowed to drain into the wetlands and ultimately to the river.



From time to time, especially after Milton, dirt in the pipes or leaves in the streets collects in the ponds, such as in the pond to the left, creating a sandbar.



The dirt and sediment are removed from the pond to make certain the pond is capable of retaining the quantity of water for which it was designed.



The “mud” is left to dry for a few days so as not to dirty the street, then it is hauled away.

Why No Fishing

All of the ponds in Tampa Palms were created as stormwater retention ponds, as mentioned to the left, and not recreational elements for fishing, swimming or boating.

DANGER
No Fishing
Swimming
or Boating

There are a number of reasons why the Tampa Palms ponds are posted as “No Fishing, Swimming or Boating” including:

1. The ponds include stormwater structures such as in-flow pipes that can be dislocated by folks fishing and result in street flooding. This happened at the entrance to one village where a large rock was dragged in front of an outflow pipe causing back-up. The rock was tangled in fishing line and lures.
2. Some ponds have irrigation apparatus. A person illegally fishing in one pond broke the well-fill control and flooded first the pond and then the wetlands and finally portions of the village behind the pond.
3. Stormwater ponds are not the friendliest places to fish between their water quality and the fact that they are filled with deadly snakes and alligators.

Stormwater ponds are designed to collect impurities from the drains, including oils, fuel and even heavy metals, along with nutrients from fertilizers. These pollutants sink to the bottom of the water pool.

4. Frequently people arrive to fish, park vehicles on the grass creating ruts and either cover or steal the “No Fishing” signs, leaving only the alligator warning signs.

New and more tamper-proof signs have been ordered.

5. Faux fisherman, use the pretext of fishing to circle ponds and “check out” homes for mischief or worse.



Bottom line, fishing is encouraged in the Hillsborough River from River Park. The police are often called for pond fishing in Tampa Palms.

Walkable/Rideable Tampa Palms

Sidewalks & Trails At Home Plus Amazing Access

A Few Feet From Every Door

One of the elements of vital strategic advantage that Tampa Palms enjoys is the community's substantial network of public paths and trails.

Every resident living on a public street in Tampa Palms has a sidewalk outside their front door; the same is true of most gated villages.

These village sidewalks all lead to the boulevards, where there is a sidewalk on one side and a wide asphalt multi-modal path on the other. The boulevards & spine roads include:

- Tampa Palms Blvd
- Compton Dr.
- Amberly Dr.



The boulevard paths and sidewalks provide places where there is shade and benches to relax and enjoy the view at key Tampa Palms locations:

- Huntington-Wellington pond
- Asbury pond
- Mezzo
- Cambridge pond
- Compton Park
- Enclave entry



When using the multi-modal paths, Tampa Palms residents can walk, jog, or cycle to numerous amenities all located within Tampa Palms.

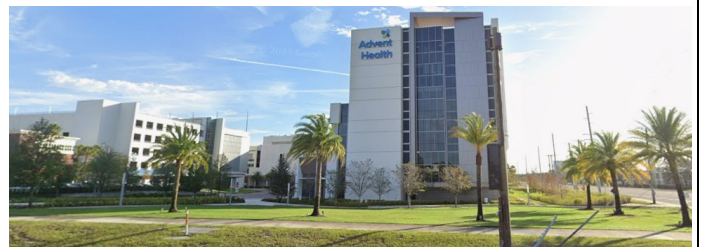
- Shopping centers
- 5 Parks (3 w/ trails)



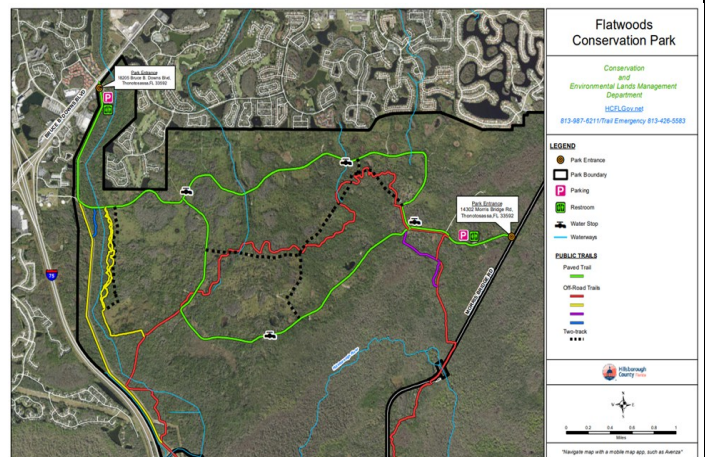
Tampa Palms Is Connected To Everywhere

The County's network of paths connects seamlessly with the Tampa Palms sidewalks and path and provides access to the neighboring communities and beyond.

From BB Downs, Tampa Palms residents (the young and fit ones) they can walk, jog or bike on the multi-modal paths south along Bruce B Downs all the way to Advent Tampa's Hospital and USF or south to Wiregrass Mall.



For the trail adventurer, only 2.5 miles north of Tampa Palms on BB Downs is the entrance to Flatwoods Park



A Few Of The Questions Tampa Palms Residents Have Recently Asked the TPOA

AFAQ For Neighbors; New and Long Standing

An influx of new neighbors, as well as, multiple changes in Florida laws regarding HOA's, trees, wetlands and much more have caused residents to ask questions. A few of the more common with the TPOA's answers follow.

- ◇ ***I just received a notification of a standards matter on my property. The language seems harsh [14 days]; why doesn't the TPOA just email me or call me?***



Both the language in the notifications and manner of notifying (US Mail versus calls or emails) are as is required by FS 720 (the Florida statute covering HOA's). Each notice also contains message from the TPOA that states "if there are extenuating circumstances or if more time is required, to call the TPOA."

- ◇ ***Are emails or letters to the TPOA asking that action be taken against other neighbors on what are perceived to be problems in the neighborhood kept confidential?***

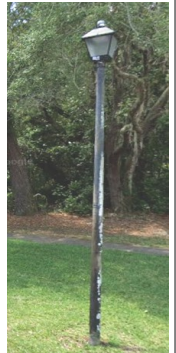
The TPOA does not publish neighborhood reports and emails are only retained until they have no further practical use BUT any owner can ask to see any portion of the TPOA records. Only parcel owners within the TPOA are allowed to have access to the records by right.

- ◇ ***The street signs and traffic signs in Tampa Palms look good BUT the streetlights in some of the neighborhoods are pitted, scratched, teetering and almost embarrassing to the neighbors. Can the TPOA take care of them too? Also who reports them when the lights are out?***

The street lights are the property of TECO and are paid for by the City. Neither the TPOA nor the CDD can touch them. Requests have been made to the City to require improvements but so far no action.

Anyone observing a street light out can call 813 223-0800 and report it. (You need an address or the number on the pole.) You can also call the CDD (813 977-3933) and they will help report the outage.

Unlike the street lights, the City allows Tampa Palms to upgrade the street signs and traffic signs to make them more attractive as long as the signs remain exactly where the City has determined that should be placed.



- ◇ ***Why are we seeing vehicles with commercial markings parked outside of garages in driveways? Didn't Tampa Palms adopt regulations to prevent automobiles, trucks, vans, or other vehicles with business advertising from parking in driveways?***



Yes in 2019 restrictions against parking commercial vehicles in driveways were adopted. In 2024 the Florida State legislature modified FS 720.3075 3 (d) to prohibit HOA's from restricting work vehicles despite designations from being parked in driveways.

This does not apply to "commercial" vehicles such as semi's, and multi-axel vehicles or vehicles with a gross weight over 26,001 pounds which are still prohibited.

Other restrictions such as RV's, boats and trailers continue to be restricted from driveway parking,

- ◇ ***Does the TPOA have any responsibility for the sidewalks in the villages?***

No. In the villages of Tampa Palms that are ungated, the sidewalks are part of the public rights of way and they are the responsibility of the City of Tampa. For sidewalks in the gated villages, the streets and sidewalks are usually the responsibility of the sub-association HOA.

For problems with City sidewalks, residents can call the City at 813 274-3101.





Tampa Comprehensive Plan Under Revision

A Changing Vision For The City of Tampa



Tampa Palms - Unique Part Of The City of Tampa

City-Wide Plan,

Not your grandpa's suburb, Tampa Palms is a timeless community set in a location that promotes both a suburban and urban vibe.

- Along BB Downs with easy access to I-75
- Close to USF, Moffitt, Haley VA, Advent Health

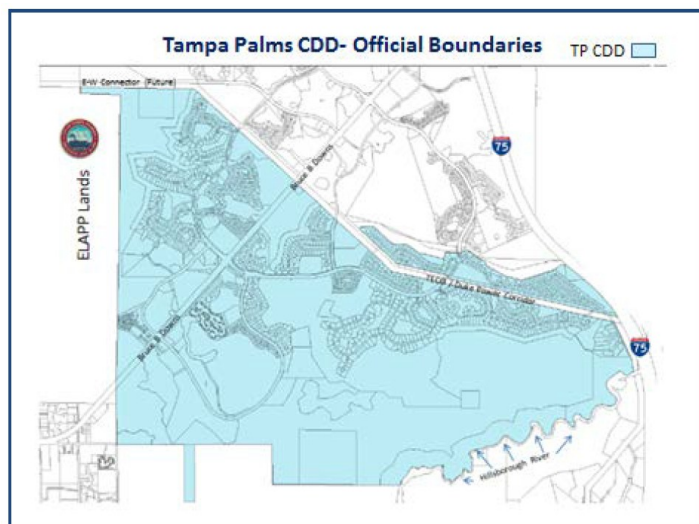
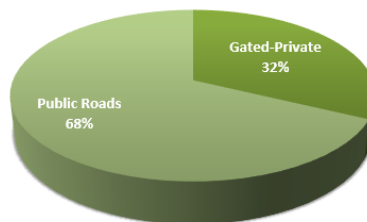


Tampa Palms is home to more than 6,500 residents in homes ranging from apartment homes to single family homes to estates; all interspersed around the more than 4,100 acres of beautiful native Florida preservation lands.

* Two remote apartment complexes are part of the CDD but not the TPOA

Although there are nine gated villages, the vast majority of TP family homes are located in a very typical urban manner along public roads maintained by the City of Tampa.

Family Homes Located



The City of Tampa is engaged in a process to modify / amend the Tampa Comprehensive Plan. The comprehensive plan is a strategic document that outlines the City's forward looking vision.



The adopted Vision Statement is rooted in objectives that wrap around affordable and workforce housing needs for the coming two decades.

Changes to current 2040 Plan are driven by the anticipated growth forecast for the next twenty years and how that growth can be accommodated.

How much growth do we expect?

	Year 2020	Year 2045	Estimated Growth by 2045
Homes	158,000 homes	236,000 homes	+77,000 homes +48%
Residents	390,000 residents	497,000 residents	+108,000 residents +28%
Jobs	329,000 jobs	588,000 jobs	+258,000 jobs +78%



Source: Plan Hillsborough 2045 Long-Range Growth Forecasts
<https://planhillsborough.org/2045-long-range-growth-forecasts/>

One interesting new goal included in the future land use section is that of creating a **compact city**. The "compact city" urban planning concept refers to among other things high residential density.

*LU Goal 2: Support Tampa's existing urban form **and create a compact city** with complete neighborhoods that provide a variety of housing types, transportation options, green spaces, services, and employment opportunities. (New).*

Section updates are available on-line at the Planning Commission and are presented in a very easy to review manner. It is online at <https://planhillsborough.org/tampa-comp-plan-section-updates>.

The City has produced an excellent overview of the process and it has been uploaded to the TPOA's website for convenient viewing.

<https://tpoa.net/LiveGrowTampa'sComprehensivePlan.pdf>.

Water Restrictions In The City of Tampa

What Water-Use Restrictions Are In Effect?

With limited rain this Spring in Tampa Palms, residents trying to improve their landscape continue to inquire if the watering restrictions are still in place. Many are confused because the County has a twice weekly schedule.



The answer is yes, the City of Tampa's once a week mandate is year-round since 2024.

Address Last Number	Watering Day
0 or 1	Monday
2 or 3	Tuesday
4 or 5	Wednesday
6 or 7	Thursday
8 or 9	Friday
No fixed street address such as cul de sacs.	

The allowable days for watering depend on the last number in the home's address.

Watering is not permitted between 8am and 6pm on any day.

Hand Watering OK, Except For Lawns

Hand watering and micro-irrigation of landscapes, such as flowering plants, vines, shrubs, palms, trees, ornamental grasses and groundcover, is allowed any day and any time. *All hoses must be fitted with an automatic shut-off garden hose nozzle.

New Lawns (60 Day Establishing)

The City has established allowable exceptions for new laws. To reviewed them go online to <https://www.tampa.gov/bluewater/conervation/how-to-water-smarter>

On that same site, the City offers excellent suggestions for setting irrigation times to use just the water needed for various times of the year to keep landscape in top shape and manage the cost of potable water which is increasing commiserate with the costs to produce it.



The cul de sacs in Tampa Palms, which are owned by the City (although the City does not maintain them), are irrigated on Fridays with potable water paid for by the CDD. The boulevards do not use potable water and are governed by a SWFWMD permit which oversees use.

City Answers Golf Cart Question



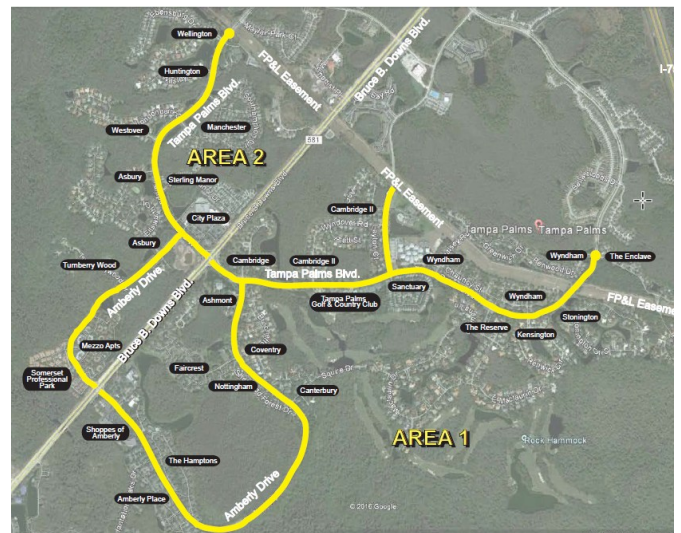
Can Golf Carts Be Legally Used On Tampa Palms Roads & Paths

Residents have called the TPOA to complain about golf carts driven on the jogging path and sometimes on the roads in Tampa Palms. They have asked if that is legal and asked that the TPOA take steps to stop such activity.

The jogging paths lie along the spine roads in Tampa Palms:

Tampa Palms Blvd
Amberly Drive

Compton Drive
Yardley Way (partially)



These are all City of Tampa public rights of way (ROW).

Tampa Palms (neither the CDD nor the TPOA) have any jurisdiction over the use of these ROWs. Tampa Police Dept oversees public use.

Per communication from the City of Tampa Legal Dept, the answer to the question of golf carts is that on the public rights of way golf carts may not be used.

No. City of Tampa Code Sec. 14-55 states that golf carts are permitted on public roads on Davis Islands. There are no other exceptions in the city except for golf courses and crossing the street to get from one side of the golf course to the other.

The City attorney pointed out that Tampa Palms includes gated villages which have private rights of way and without more specific information, she could not weigh in on the use of golf carts in those areas.



Tampa Palms Has Amazing Schools And Amazing Parents



Chiles and Tampa Palms Say Good By Ending Another Wonderful Year

Tampa Palms Elementary School 5th graders bid farewell on May 28th in real style with what they called a “5th Grade Series Finale”.

Students, with teachers



and parents walked from the school to the Compton Park Community Center where they all enjoyed true star treatment that included a lavish Hollywood-themed party complete with awards and a buffet lunch.



At Chiles Elementary School more than 50 former Chiles Falcons came back home to cheer on and lead the 2025 5th graders graduating during their school clap-out!

From graduates of high school and college, the Chiles legacy is strong.



Families Teachers and Business Sponsors Make All The Difference

Business Partners have always made very substantial contributions to our schools.

David DiRenzo, Business Sponsor of Tampa Palms Elementary and owner of Window Hero North Tampa, recently donated a golf cart to Liberty Middle School.

David and his wife are a Tampa Palms residents and their son is on his way to Liberty in the Fall.



Spoiling these extraordinary teachers with Eagle Bites Cart day, soft-serve sundae events and specially catered lunches are only a few of the ways Tampa Palms parents support and appreciate the teachers and administrators at the Tampa Palms school.



The Tampa Palms Country Club

Drop In To Your Club There Is A Lot Happening



Have you met the new Tampa Palms Club Manager, George Tucci?

George, originally from Orlando, has been part of the Invited Clubs family for 11 years. He comes to Tampa Palms from the Center Club in Tampa.



Family Night | Wednesday | 5:00p.m.



Friday Night Live | Friday | 6:00p.m.



Madagascar Dinner | Thursday, June 26th | 6:30 PM - 8:30 PM



Community Director: Brian Koerber
Community Liaison: Leslie Caruthers
Parks Supervisor: Michael (Dasch) Bergmann

16101 Compton Drive M-F 9 AM - 5 PM

Phone: 813 977-3337

Fax: 813 978-8067

E-Mail: tpoamail@aol.com

BkoerberTPOA@aol.com

Web Site: www.tpoa.net

Board of Directors

Tracy Falkowitz, President 813 977-3337

Maggie Wilson, Vice President 813 977-3337

Debbie Libertiny, Secretary 813 977-3337

Don Oneal, Treasurer 813 977-3337

Jodi Pecoraro, Director 813 977-3337

CDD

16311 TP Blvd. West

Maggie Wilson, Consultant

Phone: 813 977-3933

Fax: 813 977-6571

E-Mail: cdd.tampa@verizon.net

CDD Board of Supervisors

Gene Field (Chair) 813 977-3933

Don Oneal (Vice Chair) 813 977-3933

Richard Diaz 813 977-3933

Tracy Falkowitz 813 977-3933

Gregory Horvath 813 977-3933

Tampa Palms Parks

Compton Park 813 972-0897

Hampton Park 813 972-5699

Police & Fire

911

Non-Emergency Police 813 231-6130

Non-Emergency Fire 813 223-4211

Local Schools

Tampa Palms Elementary 813 975-7390

Lawton Chiles Elementary 813 558-5422

Liberty Middle School 813 558-1180

Freedom High School 813 558-1185

Miscellaneous

Street Repairs 813 274-3101

TECO 813 223-0800

Progressive Waste Solutions 813 248-2820

Water Department 813 274-8121

New Tampa Rec Center 813 975-2794

Councilman Viera 813 274-7073

Commissioner Hagan 813 272-5452



July - Aug 2025 Amenities Calendar



SUN

MON

TUES

WED

THURS

FRI

SAT

July 2025

		1 9 Am Private	2 Closed Carpets	3 4 Private Event	4 Independence Day 10 AM Private 5 PM Private	5 10 Private Event) 5 Private (2)
6 8 Private Event	7	8 9 Private Event	9 6 PM CDD	10 10 TPWC Bridge 4 Private Event	11 10 Private Event 5 Private Event	12 10 Private Event (2) 5 Private Event (2)
13 8 Private Event 11 Private	14 5 Covenants Com	15 9 Private Event 10 TPWC Board 6 TPOA Board Mtg 7 Private Event	16 9 Private Event (2) 10: 30 Sanctuary 4 PM Private	17 4 Private Event 6 Private Event	18 10 Private Event 5 Private Event	19 10 Private Event (2) 5 Private Event (2)
20 8 Private Event	21	22 9 Private Event (2)	23	24 TPWC Bridge 4 Private Event	25 5 PM Private	26 10 Private Event (2) 1 Private 5 Private Event (2)
27 8 Private Event	28	29 9 AM Private	30	31 4 PM Private Event		

August 2025

Hillsborough County School Year 2025-26 begins August 11th					1 9 Private Event	2 10 Private Event (2) 5 Private Event
3 8 am Private	4	5 9 Private Event	6 4 Private Event	7 9 Private Event 4 Private Event	8	9 10 Private Event (2) 5 Private Event (2)
10 8 Private Event 3 Boy Scouts 3 Private Event	11 Hills County -First Day Of School	12 9 Private Event	13 6 CDD Budget Hearing	14 9 Private Event 4 Private Event	15	16 5 Private Event
17 8 Private Event 3 Private Event	18 5 Covenants Com	19 9 Private Event 10 TPWC Board 6 TPOA Board Mtg	20 10: 30 Sanctuary 4 PM Private	21 4 Private Event 6 Private Event	22	23 4 Private Event 5 Private Event
24 8 Private 3 Boy Scouts 3 Girl Scouts 8 Private	25	26 9 Private Event (2)	27 4 Private Event	28 9 Private Event 4 Private Event	29	30 10 Private Event (2) 1 Private Event 5 Private Event (2)



Tampa Palms Owners Association
16101 Compton Drive
Tampa, FL 33647

PRSR STD
US POSTAGE
PAID
TAMPA, FL
PERMIT #1741

Tampa Palms CDD Meeting Agenda

**July 9, 2025 at 6:00 p.m.
Compton Park Recreation Building
16101 Compton Drive, Tampa, FL 33647**

1. Roll Call
2. Pledge of Allegiance
3. Strategic Planning
4. Public Comments
5. Board Member Discussions
6. Consultant Reports
...Around the Neighborhoods
Irrigation Updates
7. Other Board Business
8. Public Comments
9. Board Member Discussions
10. Adjourn

Taking Care of Pets In Tampa Palms

Tampa Palms is an area that is rich with predatory animals. The varied wildlife that occupies the wetlands and conservation areas is a major part of the charm of the Tampa Palms community.

Living in an area with non-domesticated animals roaming freely requires special attention be given to the care of pets, especially small dogs, and puppies and all cats and kittens - no matter the size.

The Humane Society and Florida Wildlife Commission suggest a few rules to save the life of beloved pets.

1. Never leave a pet out of doors or on a screened porch by itself.
2. Never allow a dog on a leash to approach a pond.
3. Never leave food bowls outdoors.

